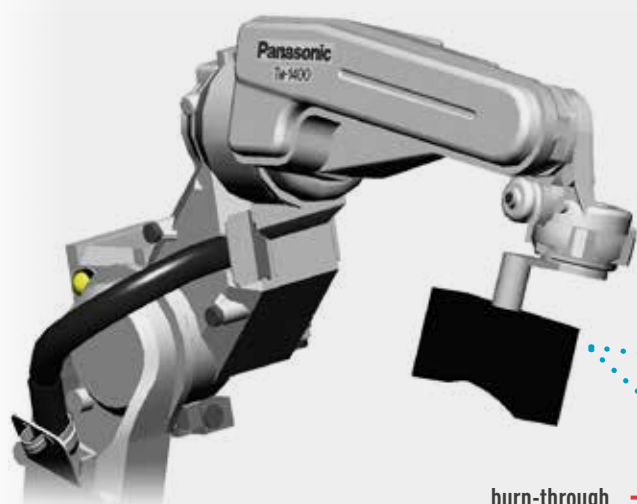


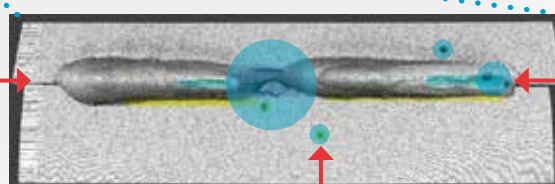
# Bead Eye –

## Automated inspection of welding seams

The new **Bead Eye** is a *Visual Weld Inspection* system / Both hard and software solutions offer improved traceability through full automation of manual visual inspection. Due to the automation process a labor saving is achieved - the visual inspection previously carried out by the operator is no longer necessary leading to a reduction in the operator's workload. Traceability is also improved. The newly developed automated inspection assesses the weld geometry and collects the inspection data for further processing.



burn-through



pore

spatter

### Automated inspection

The Bead Eye enables the identification of different types of welding defects:

- › Bead deviation
- › Undercut
- › Hole
- › Splatter
- › Pit

### Exact evaluation

- › Reference data comparison
- › Inspection judgement

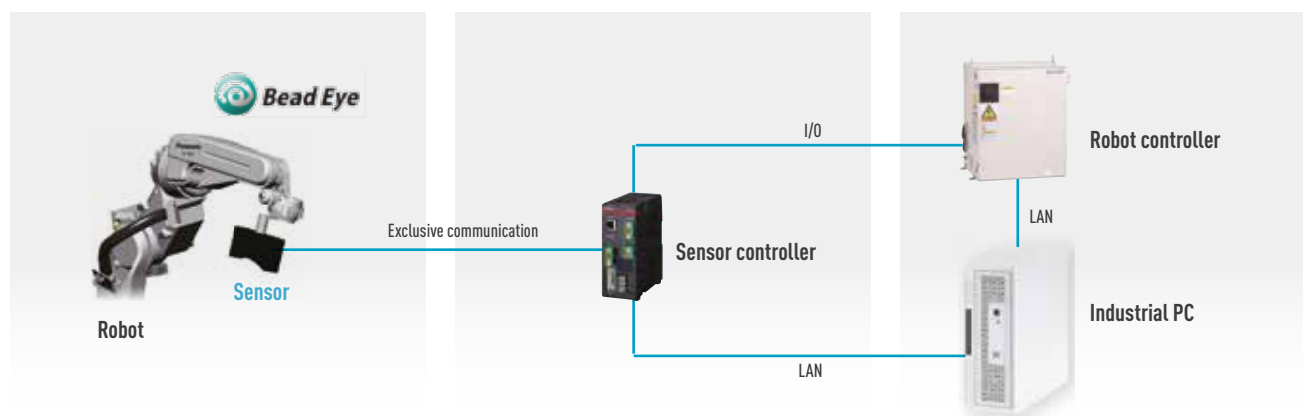
### Transparent traceability

- › Inspection data is stored digitally on an industrial PC

# Bead Eye –

Automated inspection of welding seams

## Weld inspection solution



This product combines welding know-how with automated inspection and 3D data analysis technology from LINKWIZ, Inc. providing a weld inspection that can detect various welding defects.

## Specifications

	Bead Eye - Automated inspection of welding seams
Applied robots	TM, TL, TS, LA series Controller: GIII / WGIII / WGHIII
Application	welds with MAG / MIG / TIG / Laser

This function requires an inspection of the suitability of the corresponding component.

### Panasonic Connect Europe GmbH

Robot & Welding Systems Europe  
Jagenbergstraße 11a  
41468 Neuss, Deutschland  
[pfse.panasonic.eu](mailto:pfse.panasonic.eu)



Phone: +49(0)2131/60899-0  
email: [pwse.sales@eu.panasonic.com](mailto:pwse.sales@eu.panasonic.com)